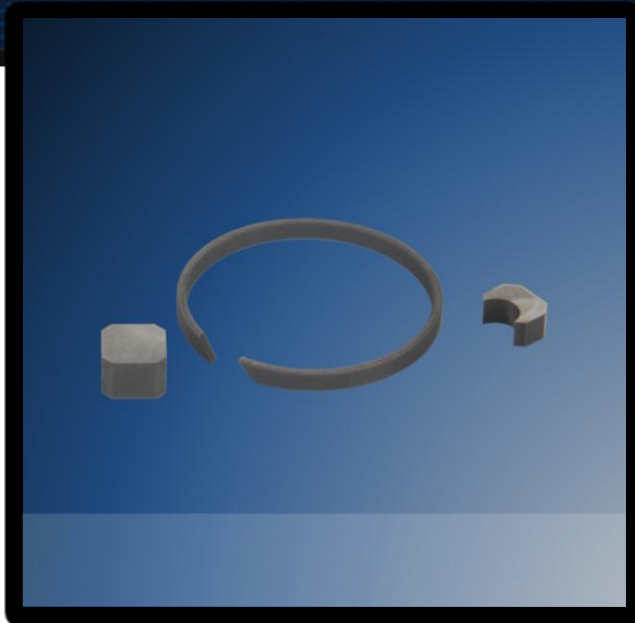




Shut-Off Valve, 3616848-2



Valcor 3616848-2 Repair Kit

APPLICATION -

Honeywell GTCP 331-200/250 APU

ELIGIBILITY -

B757-200/-300, B767-200/-300,
A300, A310, A320series

CMM/ATA - 49-20-01

FAA PMA Supplements -
48

ADpma, LLC is committed to providing the airline industry with cost effective PMA solutions through its offering of quality parts and technical support. Our parts are designed and tested utilizing the latest technologies and are produced with state of the art manufacturing equipment and processes. The collective disciplines employed by the engineering team at ADpma are essential to inspiring and delivering innovative solutions and the highest level of service to our customers. Today, airline operators and repair stations worldwide are realizing the following benefits from their use of our FAA approved parts, which we've designed and manufactured specifically for the 361684-2 Shut-Off Valve installed on the 331-200 series auxiliary power unit:

- **Superior products** designed to meet or exceed customer performance and quality requirements
- More effective **PMA solutions** that deliver operational transparency for end users
- Significant **cost reductions** from OEM pricing and total life cycle costs
- Achievement of **tangible** operational and financial benefits
- **Assurance** that advertised products are in stock and available for immediate delivery
- PMA's backed by a **warranty** designed to exceed the OEM's standard, preserving the customer's initial cost savings throughout the part's expected service life
- **Product support** that is based on decades of experience in airline operations and high tech manufacturing

www.adpma.com

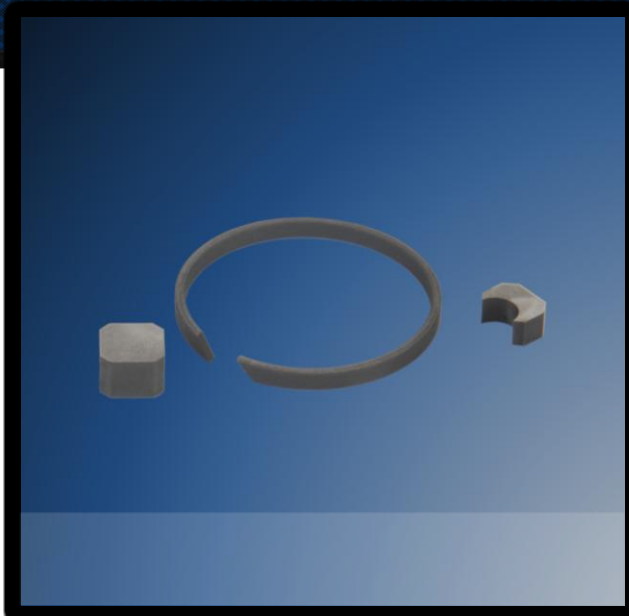
ADpma, LLC
1580 Phoenix BLVD, Suite 225
College Park, GA 30349

Tel: 770-994-2251
Fax: 770-994-2272

ADpma, LLC
401 Century Court
Piney Flats, TN 37686
Tel: 423-391-8834
Fax: 423-391-0919



Shut-Off Valve, 3616848-2



Valcor 3616848-2 [Repair Kit](#)

PARTS AVAILABILITY - ADpma maintains stock on *all* of its advertised parts. To control costs and to provide preferred options to buyers, ADpma sells direct through [StockMarket.Aero](#) and [ILSmart.com](#) with accurate, real time stock listings and quotes.

ADpma's parts are also available to customers worldwide through the global distribution network of Avio-Diepen.

<u>OEM PN</u>	<u>ADpma PN</u>	<u>DESCRIPTION</u>	<u>PMA Supplement</u>
V44702-263	ADP49137-1	SEAL	48
V44731-204-1	ADP49141-1	RING	48
V44749-2632	ADP49143-1	BEARING	48



www.adpma.com